

bott uno3

Van racking system



Pure, simple racking



Robust & durable

Affordable quality

CONTENTS

	Page
Overview	4 - 5
Standard modules	6 - 7
Crash tested	8 - 9
Perforated end frames	10 - 11
Low front shelf	12 - 13
Basic shelf	14 - 15
bottBox shelf	16 - 17
Long item top tray	18 - 19
Drop front feature	20 - 21
Locker	22 - 23
Load security	24 - 25
Worktop	26 - 27
Systainer ³	28 - 29
Organizer	30 - 31
varioSlide	32 - 33
bottBox	34 - 35
Eurobox	36 - 37
Van racking accessories	38 - 39
Additional products & services	40 - 41





■ work ■ smart ■ bott

About

With over 90 years of industry experience, Bott Ltd is part of the Bott Group, world leaders in the manufacture and supply of quality van racking systems.

For small, medium and large vans, bott uno3 provides a safe, robust and affordable alternative to traditional wooden racking systems.

Whatever your trade, a bott uno3 racking solution can help you better organise equipment and improve your efficiency.

bott uno3 has been crash tested to comply with ECE R17 standards - primarily for safety but also for peace of mind.





Pure, simple racking

A professionally fitted van racking system ensures a safe, reliable, well organised workspace and helps to create a great first impression with customers.

With durable, steel construction and a comprehensive range of features, the bott uno3 system offers quality and functionality, at an affordable price.

With efficient storage and mobile working solutions; such as integrated shelves, removable cases, integral vice and workbench options, a bott uno3 solution can help improve your efficiency - whatever your trade!

- Functional, strong & tough
- Quality with value
- Highest safety standards
- Efficient, mobile working
- Professional & tidy

For more information about bott vehicle conversions and services, visit: www.bottltd.co.uk





Standard modules

- The bott uno3 system is manufactured to the highest quality, at our own ISO certified plant in the UK.
- Modules are constructed from strong galvanised and powder-coated steels and designed to store a wide range of high-capacity storage accessories.
- Various sized modules available - dependent on vehicle make and model.
- Single standard modules are available in 7 widths, 1 depth and 3 heights; ranging from 590 - 1486mm (W), 360mm (D), 900 - 1500mm (H).
- Dual standard modules are available in 10 widths, 1 depth and 3 heights; ranging from 1598 - 2942mm (W), 360mm (D), 1000 - 1500mm (H).

Before



After

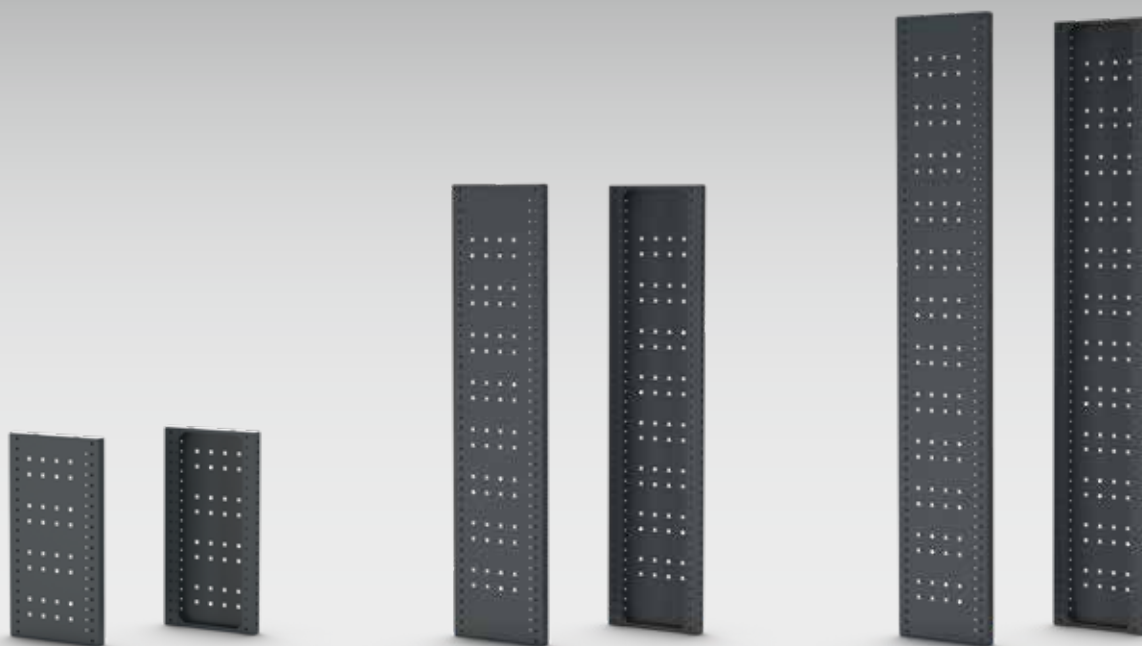




Crash tested

- bott uno3 racking has been designed with safety at the forefront. Weak, poorly secured racking can be extremely dangerous, even at low speed impacts.
- bott uno3 racking is crash tested to ECE R17 standards. The crash test simulates the collision of the vehicle with an obstacle at a speed of 50km/h. Independent experts conduct the tests with a fully-loaded vehicle. The load on the components are equivalent to those experienced during a traffic accident.
- The tests particularly focus on the fixing points to the bodywork, the floor and the side walls of the vehicle, as well as the overall construction of the van racking.
- We also pay close attention to all moving parts. The system is designed to keep tool cases and storage boxes firmly in place during transit and optional extras such as anti-slip mats and lashing straps, help prevent loads from sliding around.

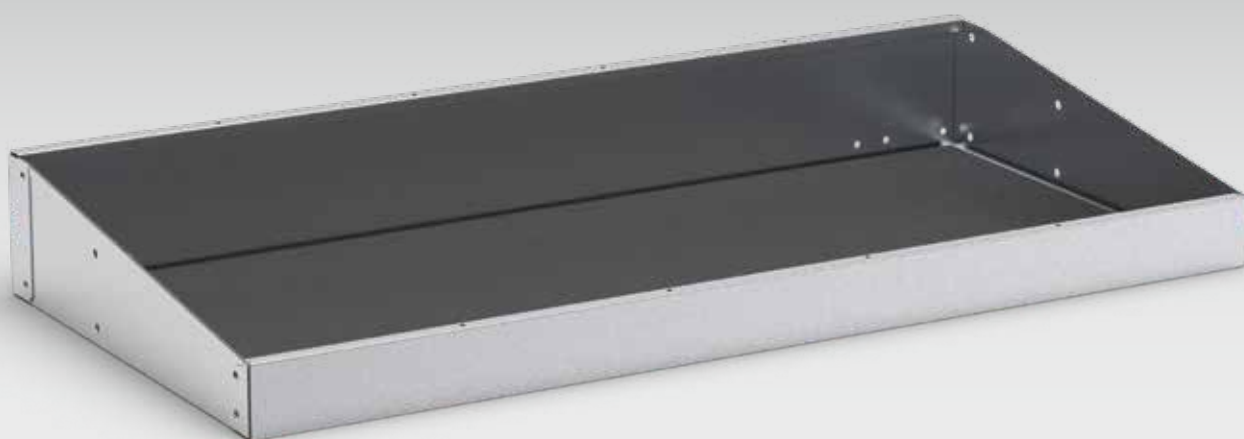




Perforated end frames

- Strong, 1.4mm thick steel end frames with reinforced folds, form the backbone of the bott uno3 system.
- Perforated panels allow for the flexible integration of a wide range of mounted tool holders and accessories, providing solid and convenient storage options.
- Finished in a durable, epoxy powder-coat paint (RAL7016 Anthracite Grey), providing protection from general wear and tear.

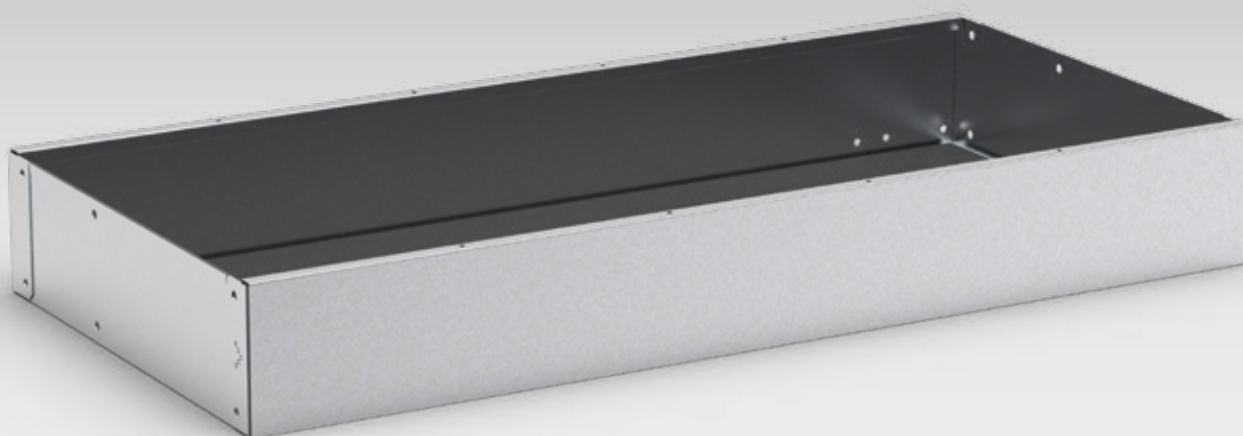




Low front shelf

- Formed from 0.8mm galvanised sheet steel, our low front shelves are designed to securely hold removable cases and equipment.
- Low front provides visible storage and easy access.
- Optional anti-slip mat helps prevent damage to loose items during transit.
- Optional aluminium dividers help to secure loose items, small fixings and fittings.
- Low front shelves come in a variety of sizes, ranging from 418mm to 1426mm (W), 248mm to 472mm (D), 50mm front/100mm rear (H).

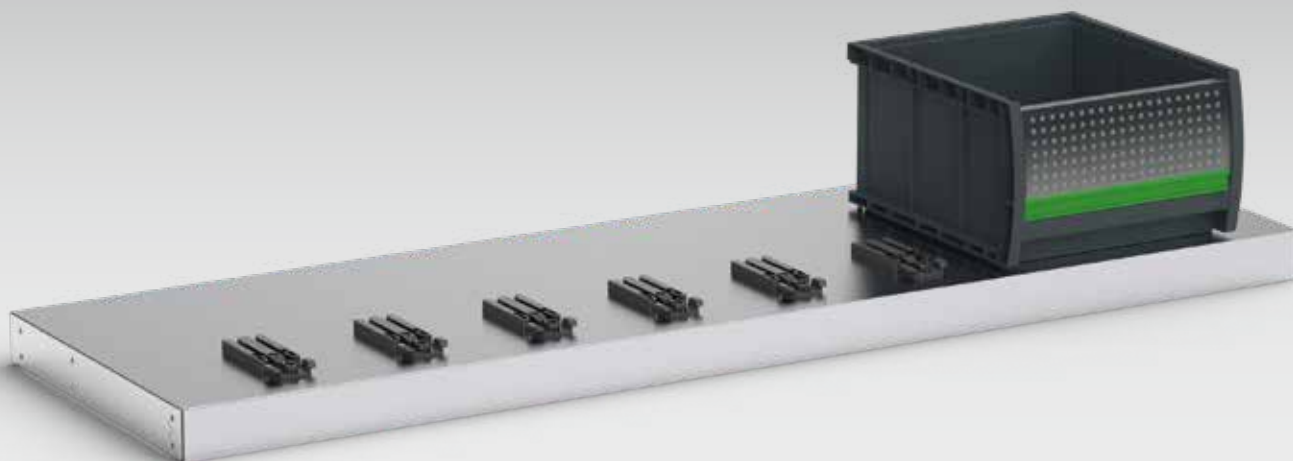




Basic shelf

- Formed from 0.8mm galvanised sheet steel, the robust basic shelf is designed for the quick and safe storage of varying sized materials and equipment.
- Optional anti-slip mat helps prevent damage to loose items during transit.
- Optional aluminium dividers create adaptable and individual storage compartments.
- Basic shelves come in a variety of sizes, ranging from 418mm to 1426mm (W), 248mm to 472mm (D), 100mm front & rear (H).

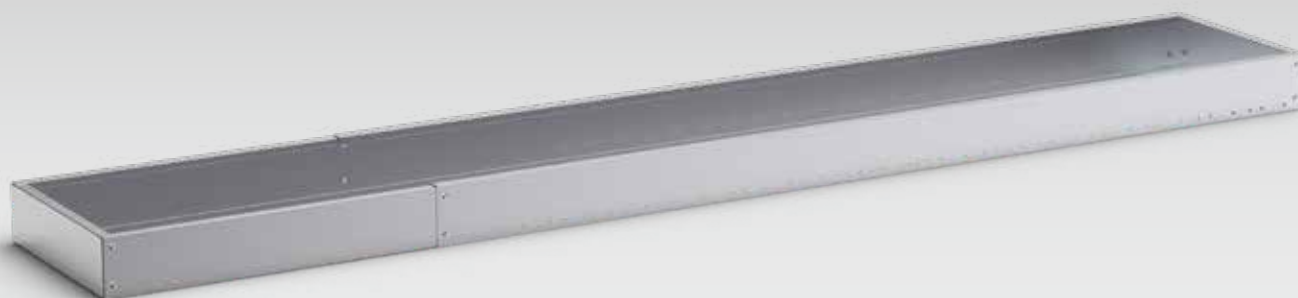




bottBox shelf

- Formed from 0.8mm galvanised sheet steel, the bottBox shelf enables the bottBox to function like a drawer.
- The bottBox can also be easily removed from the shelf.
- bottBox shelves come in a variety of sizes, ranging from 418mm to 1426mm (W), 248mm to 472mm (D), 50mm front & rear (H).





Long item top tray

- Designed to fit securely on top of a dual module, the long item top tray provides the perfect storage solution for longer items such as pipes and conduits. Formed from 0.8mm galvanised sheet steel.
- Optional anti-slip mat.
- Long item top trays are available in sizes ranging from 1822mm to 3054mm (W), 248mm to 472mm (D), 100mm front & rear (H).





Drop front feature

- The optional drop front feature is designed to keep items safely stowed during transit.
- Can be fitted at the base of a module, or used as a complete drop front shelf.
- The ergonomic drop front mechanism allows for safe and easy access of equipment.
- Optional anti-slip mat helps prevent damage to loose items during transit.
- Sizes range from 418mm to 1426mm (W), 248mm to 472mm (D), 140mm front & 100mm rear (H).

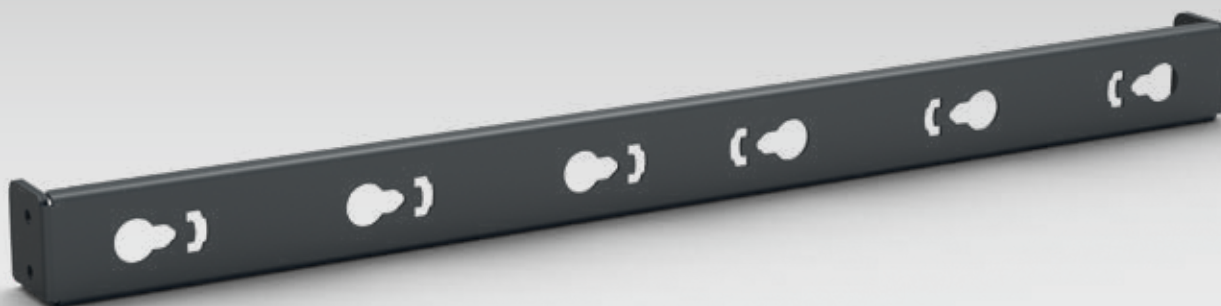




Locker

- By integrating an optional cupboard door and back panel into a standard module, a secure, lockable cupboard can be created for storing valuable items.
- Locker door and back panel formed from 0.8mm galvanised steel with reinforced corners, the locker door is strong and robust to withstand everyday use.
- Locker dimensions from 418mm to 530mm (W), 360mm and 472mm (D), 450mm (H).

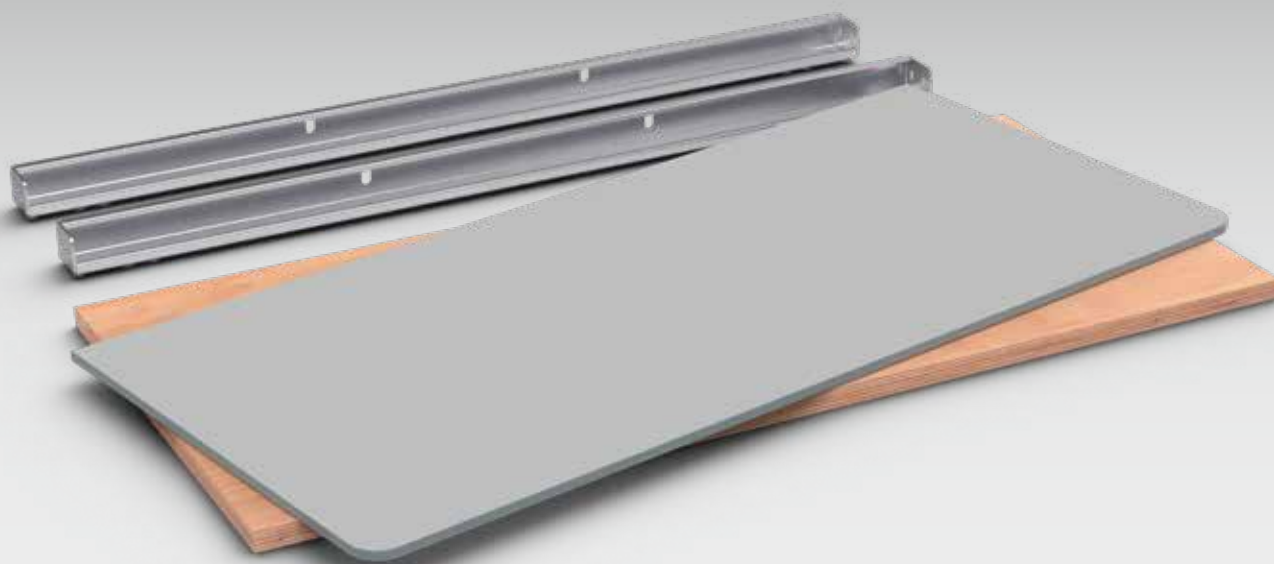




Load security

- For driver and passenger safety and to minimise damage to equipment, lower tie bars and lashing rails are designed to secure loads within the vehicle.
- 2mm thick steel, finished in a durable, epoxy powder-coat paint (RAL7016 Anthracite Grey), to compliment the bott uno3 modules.
- Dimensions from 418mm to 1426mm (W).





Worktop

- Installed on top of the bott uno3 module, an optional built-in worktop allows you to create a practical workbench.
- Combine with vice, back panel and accessories, for a functional mobile workshop.
- Resin bonded, beech ply worktops. Available in either 20mm thick multiplex or 18mm textured grey.
- Various sizes available from 814mm to 1486mm (W), 360mm to 472mm (D), 20mm (H).

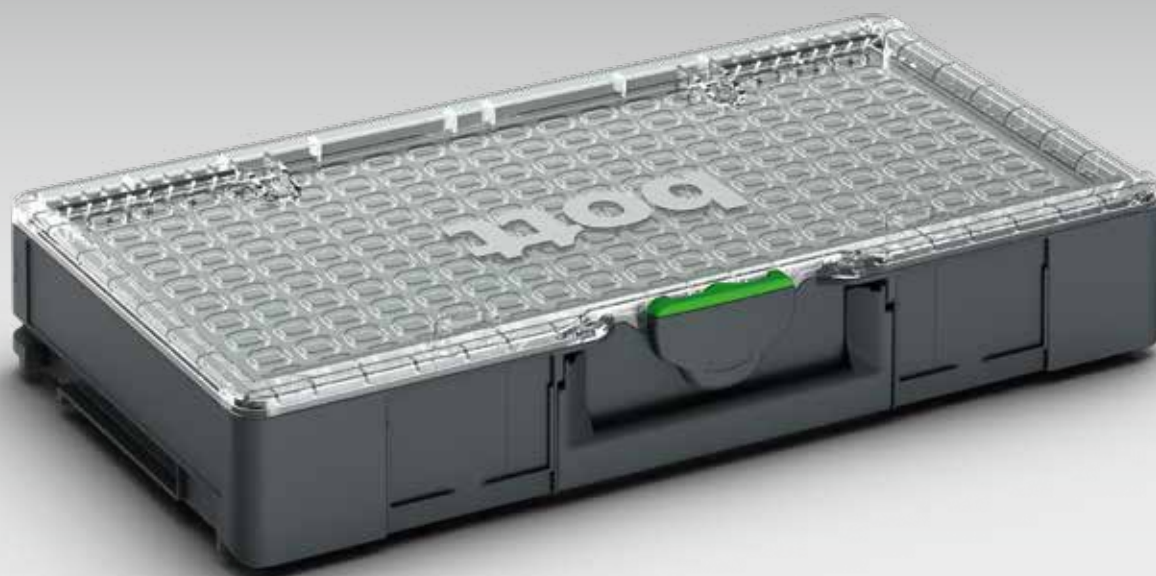




Systainer³

- The new Systainer³ generation enables you to be more mobile than ever before. Festool & TANOS have teamed up with bott, to develop a mobility system flexible for both on & off-site working.
- bott uno3 racking has been specifically designed to hold the new Systainer³ generation of cases, with simple integration via dedicated side rails.
- A practical and sturdy case system, the smart choice for the storage and transportation of power tools, hand tools, small parts and consumables.
- The tried and tested T-LOC locking element allows the Systainer³ to be connected to many additional system accessories. The patented system also enables you to open, close and connect it - with just one hand.
- The front and top carry handles allow for easy transportation, in and out of your van.





Organizer

- Transparent lid allows contents to be visible, enabling you to find the right nuts, bolts and screws in no time.
- Multifunctional T-LOC: open, close, connect – with just one twist.
- Optional labelling via 2 card slots on the front of the case, in standard bank card format.
- Can be stacked and connected to many other Systainer products.
- Load capacity: 20kg.

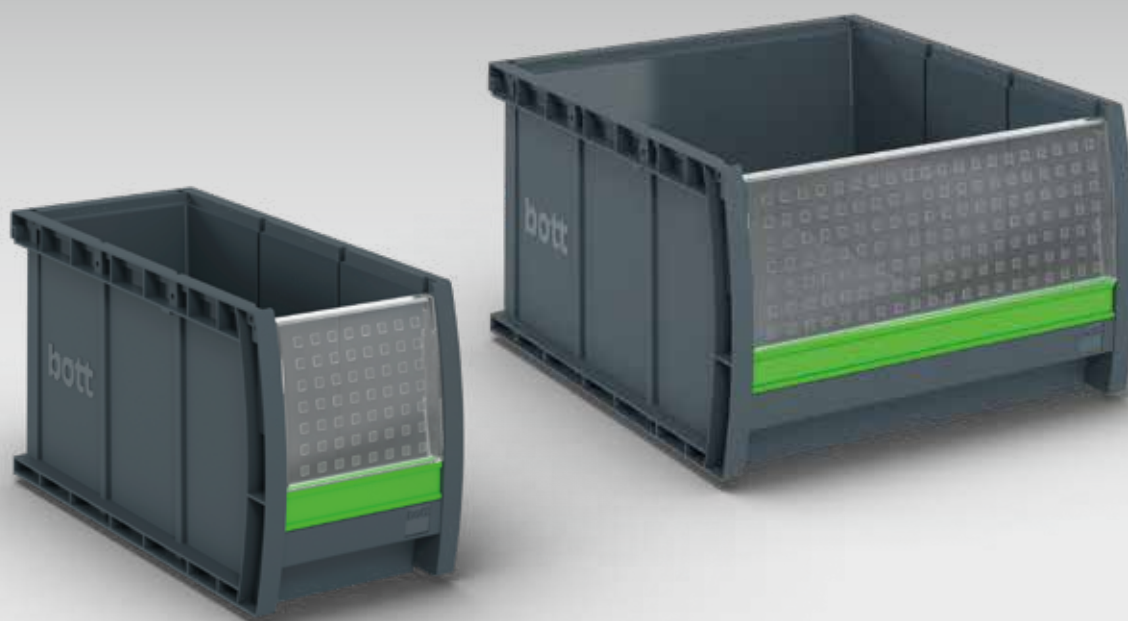




varioSlide

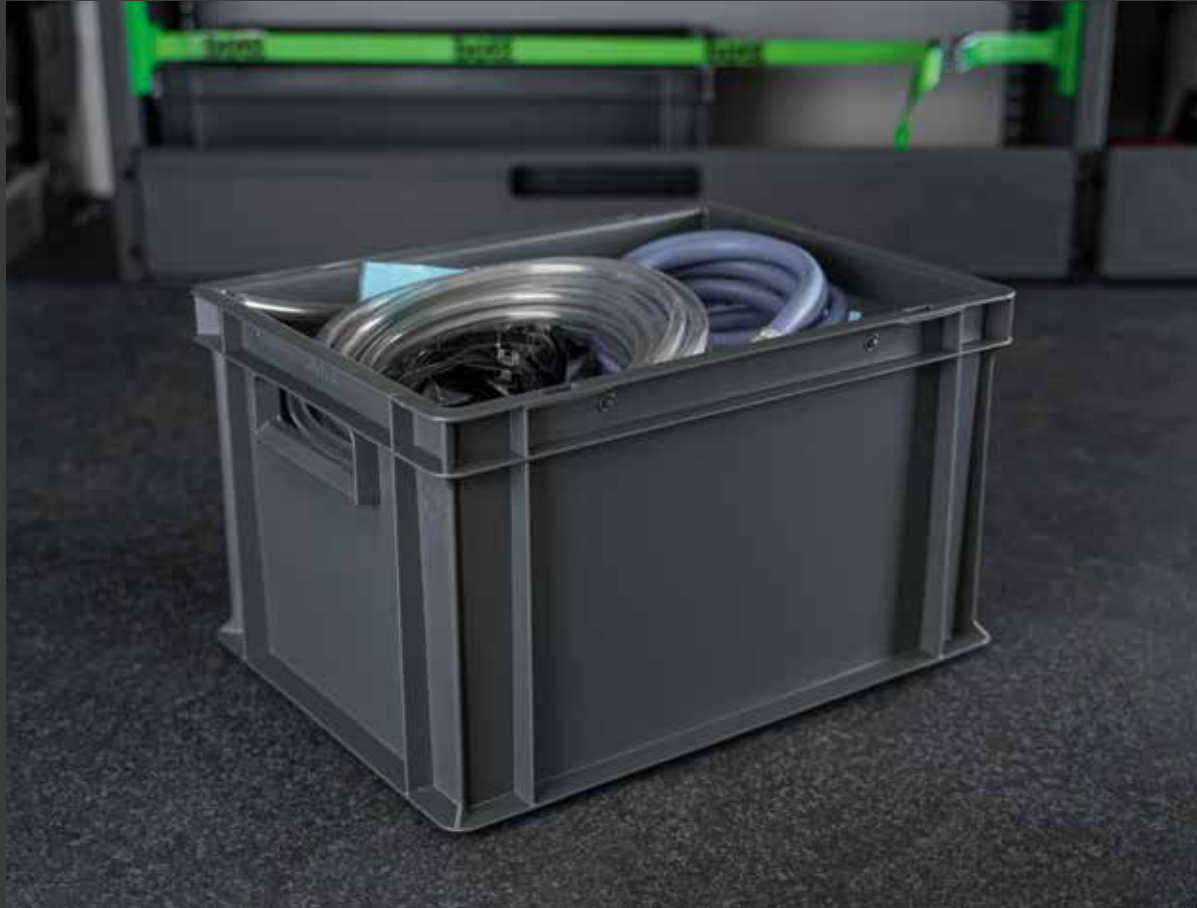
- bott varioSlide can be removed using plastic guide rails, providing a transportable drawer within the racking system.
- Hybrid drawer, made from powder-coated aluminium and plastic.
- Includes anti-slip mat for additional load protection.
- Ergonomic, wide, pull-out handle, for simple drawer operation.
- Load capacity of 20kg.
- Optional dividers available for separating small parts.
- Two heights available, 85mm and 185mm.
- Available in sizes 418mm to 1090mm (W), 360mm (D), 85mm or 185mm (H).





bottBox

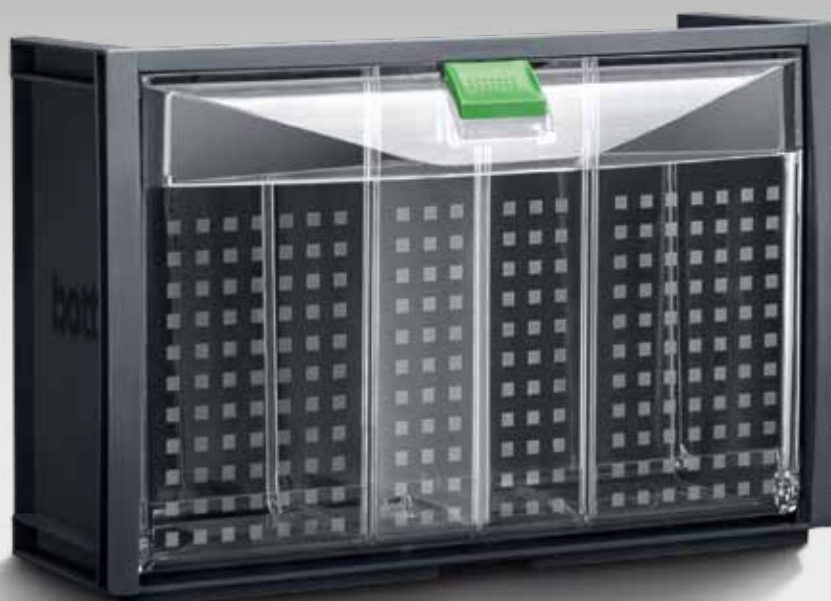
- Robust and durable, the award winning bottBox systematically organises small parts & consumables.
- Innovative properties enable simple cleaning and component retrieval.
- Transparent front panel optimises bin capacity, whilst retaining visibility of contents.
- Label slots along the front and back help identify the contents, quickly and efficiently.
- Optional dividers available.
- Available in various sizes for integrating with bottBox shelf. From 130mm & 264mm (W), 227mm, 298mm & 398mm (D), 165mm (H).





Eurobox

- Heavy-duty plastic storage bins, with modular stackable design, offering maximum volume with excellent strength.
- The bott uno3 integrated shelves are designed to hold the following sized Euroboxes: 400mm (W), 300mm (D), 120mm (H) & 400mm (W), 300mm (D), 235mm (H).
- Optional covers/lids available.
- Made from hard-wearing Polypropylene, in Anthracite Grey.



Van racking accessories

- Efficient organisation is key when working from a vehicle. With our wide range of accessories, you can clearly arrange tools, equipment, consumables and small parts. From removable cases and boxes, to clever perforated storage for easy access, no space is wasted.
- Just as in choosing the right tools for the job, choosing the right storage accessories can help boost efficiency and productivity. You can find what you need more quickly, see when stocks are running low and protect valuable equipment from damage.
- For more information on the comprehensive range of accessories available, contact one of our team: **v-sales@bottltd.co.uk**





Additional products & services

- For single vehicles to large commercial fleets, we offer a range of additional products & services, combined with expert advice and support.
- We can advise on the best racking system for your trade, business or vehicle type and guidance on safety and legal compliance.
- To help showcase your brand, we provide a full in-house vehicle wrapping service, including design, print and installation.
- Our expert electrical team provide tailored solutions, such as lighting, auxiliary power and communication equipment.
- For maximum storage space, we provide a range of light, stable and secure roof storage solutions.
- If required, we produce fully profiled floors, designed to integrate perfectly with our van racking systems.





LAKE VIEW
3031



Email: v-sales@bottltd.co.uk

Tel: 01530 410 600

www.bottltd.co.uk

